

DS-A8204D Series Storage System

Introduction

The DS-A82 series is an economical and reliable Hybrid SAN (Storage Area Network) product. Hikvision Hybrid SAN product creates a network with access to data storage servers, and it integrates Hikvision's unique video direct streaming technology as well as supports IPSAN. Hybrid SAN system supports third-party cameras such as BOSCH, AXIS, SONY, Samsung, etc., and supports RTSP and SIP protocols, and extended data retention. With no recording server needed, Hikvision's Hybrid SAN systems truly make applications simple, flexible, and budget-friendly.



Key Feature

Reliable System

- Modular and no-cable design.
- Dual controller.
- Real-time cache.
- Optional BBU (Backup Battery Unit).

High-Performance and Extendable Hardware Platform

- 64-bit multi-core processor.
- PCI-E 2.0 bus.
- Four 1000M Ethernet interfaces per controller.
- SAS interface for storage enclosure.
- High-density chassis. 4U chassis: 24 HDDs.

HDD Detection and Repair/RAID Optimization

- Detection before operation.
- Detection in operation.
- Fault repair.
- RAID 0, 1, 3, 5, 6, 10, 50.
- Global and local hot spare.
- Quick RAID building.
- Capability of cascading up to two storage enclosures behind a single SAS port.

Advanced Data Protection

- Synchronous backup of key information in system disk and HDD.
- RAID-based tamper-proof data technology.
- Auto data synchronization between devices.

Energy Efficient

- CPU load balance.
- Auto fan tuning.

User-Friendly UI

- Quick configuration.
- Various alarm management.
- Supports SADP protocol.
- Supports SNMP.

Surveillance-Specialized Stream Media Direct Storage (Direct Streaming Mode)

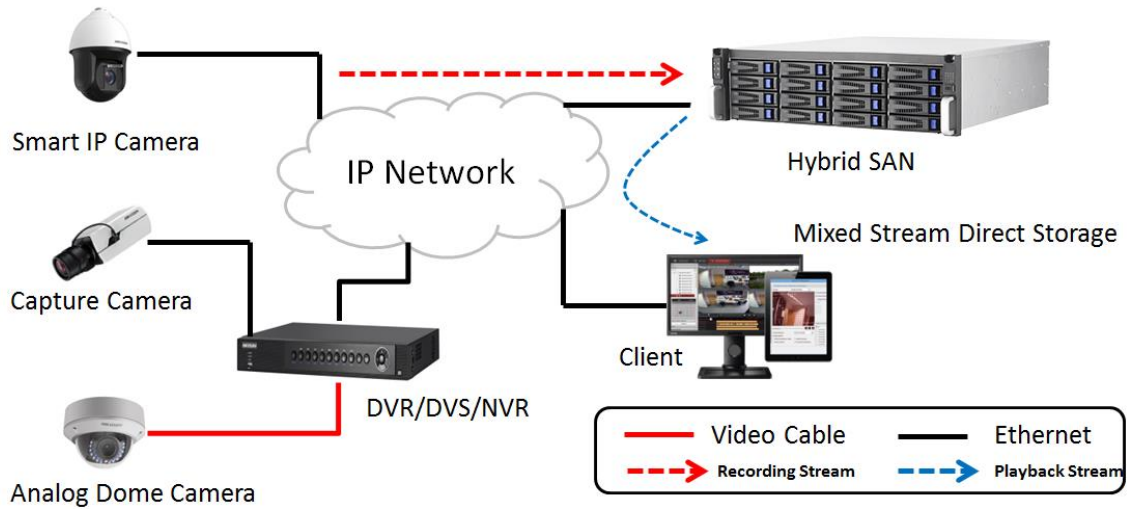
- Space pre-allocation strategy.
- Direct storage for video stream and picture stream.
- Supports direct IP camera/DVR/NVR streaming and recording.
- Supports camera access through RTSP, ONVIF, and PSIA protocol.
- Supports alarm/scheduled/manual recording.
- N+1 technology.
- Automatic network replenishment (ANR), timely uploading, and video loss alarm.
- Lock key videos.
- Supports both Direct Streaming Mode and IPSAN Mode.
- Search, play, and download videos by video type or video time.



Specification

Model		DS-A82024D
Performance	Direct Streaming mode: video (2 Mbps) + picture	448-ch (recording + playback)
	IPSAN	256-ch (recording + playback)
Controller	Controller	Dual controller
	Processor	64-bit multi-core processor
	Cache per controller	8 GB (extendable to 32 GB)/controller
HDD	HDD slot	24
	Interface/capacity	SSD (optional), SAS/Up to 12 TB
	Hot-swapping	Supported
	HDD support	Single, RAID(Enterprise Hard Disk)
	RAID	RAID0, 1, 3, 5, 6, 10, 50, JBOD, Hot-Spare
Network	Protocol	iSCSI, RTSP, ONVIF, PSIA
Interfaces	Data network interface per controller	4, 1000M Ethernet interface (4 × GbE or 2 × 10GbE is extendable)
	Management network interface	1, 1000M Ethernet interface/Controller
	MiniSAS interface	Supported
	VGA per controller	1
	USB per controller	3
General	Power supply	Redundant
	Consumption (with HDDs)	<ul style="list-style-type: none"> ● Working: ≤ 507 W (1729 BTU with 24 HDDs); ● Rated: ≤ 800 W
	Environment temperature	<ul style="list-style-type: none"> ● Working: +5 °C to +35 °C (41 °F to 95 °F) ● Storing: -20 °C to +70 °C (-4 °F to 158 °F)
	Environment humidity	<ul style="list-style-type: none"> ● Working: 20% to 80%RH (non-condensing/frozen); ● Storing: 5% to 90%RH (non-condensing/frozen)
	Chassis	19-inch 4U
	Dimensions (W × H × D)	447 x 172 x 550 mm (17.6 x 6.8 x 21.7 in)
	Weight (without HDDs)	≤ 33.5 Kg (73.9 lb)

Typical Application

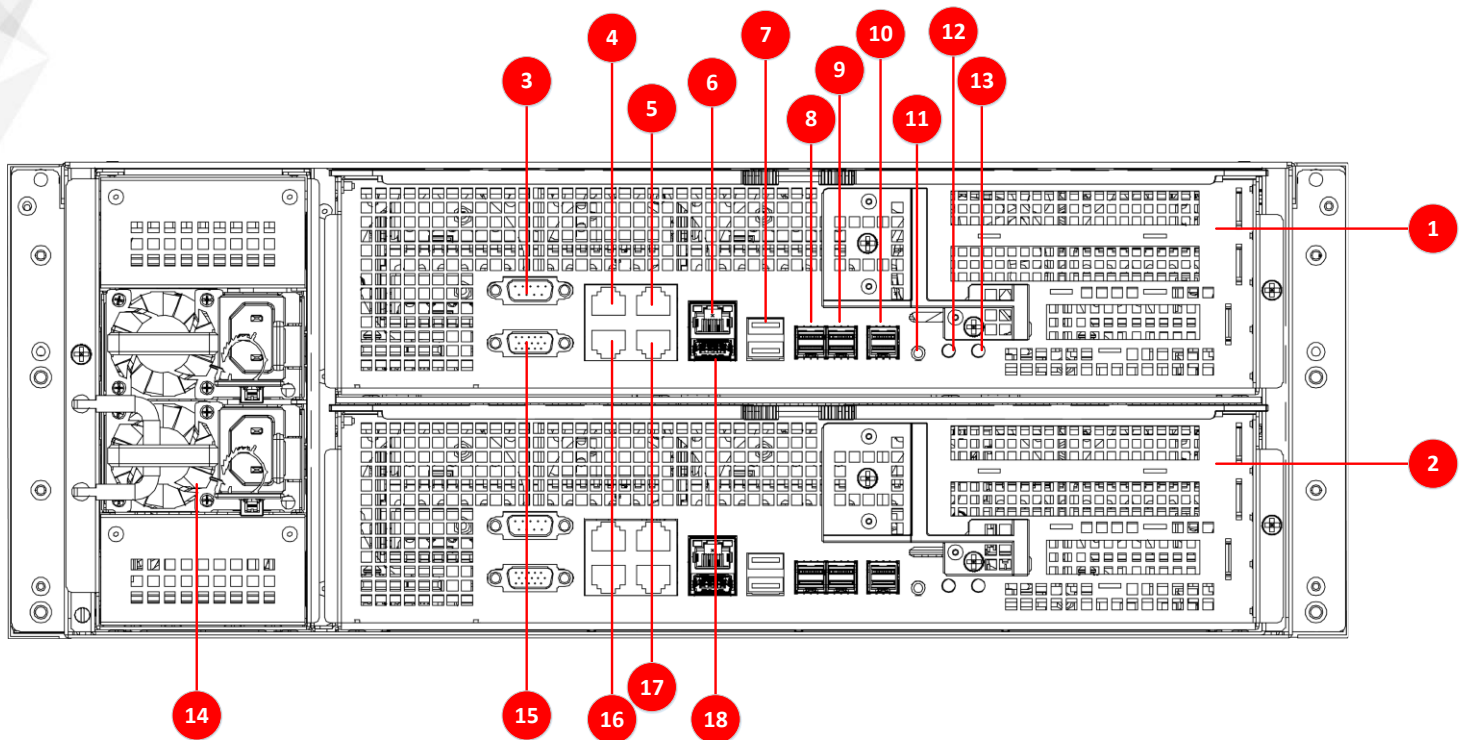


Hikvision Tested and Recommended HDDs

Note: It is strongly recommended to use enterprise HDDs in RAID mode and iSCSI application for its stability feature. Please consult with Hikvision sales before using HDDs not listed below.

HDD model	Capacity (TB)	HDD model	Capacity (TB)
ST12000NM0038	12	ST4000NM0125	4
ST10000NM0528	10	ST6000NM0095	6
ST10000NM0096	10	HUH721212AL5200	12
ST8000NM0075	8	HUS728T8TAL5204	8
ST8000NM0156	8	HUS726T4TAL5204	4
ST1000NM0045	1	HUS726T6TAL5204	6
ST2000NM0045	2	ST6000NM0034	6
ST3000NM0025	3	ST4000NM0034	4
ST4000NM0025	4	ST2000NM0024	2
ST2000NM0135	2		

Physical Interface



Note: Here we list the interfaces of controller B. The interfaces of controller A are the same with them.

No.	Name	No.	Name
1	Controller B	10	SAS interface 3
2	Controller A	11	COM interface
3	RS-232 interface	12	FN button
4	Data network interface 3	13	Power button
5	Data network interface 4	14	Power module
6	Management network interface	15	VGA interface
7	USB interface	16	Data network interface 1
8	SAS interface 1	17	Data network interface 2
9	SAS interface 2	18	USB interface

Available Model

DS-A82024D